

Installing GFI Network Server Monitor

System requirements

Computers running GFI Network Server Monitor require:

- Windows 2000 (SP4 or higher), 2003 or XP Pro operating systems.
- Windows scripting host 5.5 or higher (included in Internet Explorer 6 and in Service pack 2 of Internet Explorer 5.5; you can download it separately from <http://www.microsoft.com/scripting>).
- .NET Framework 1.1

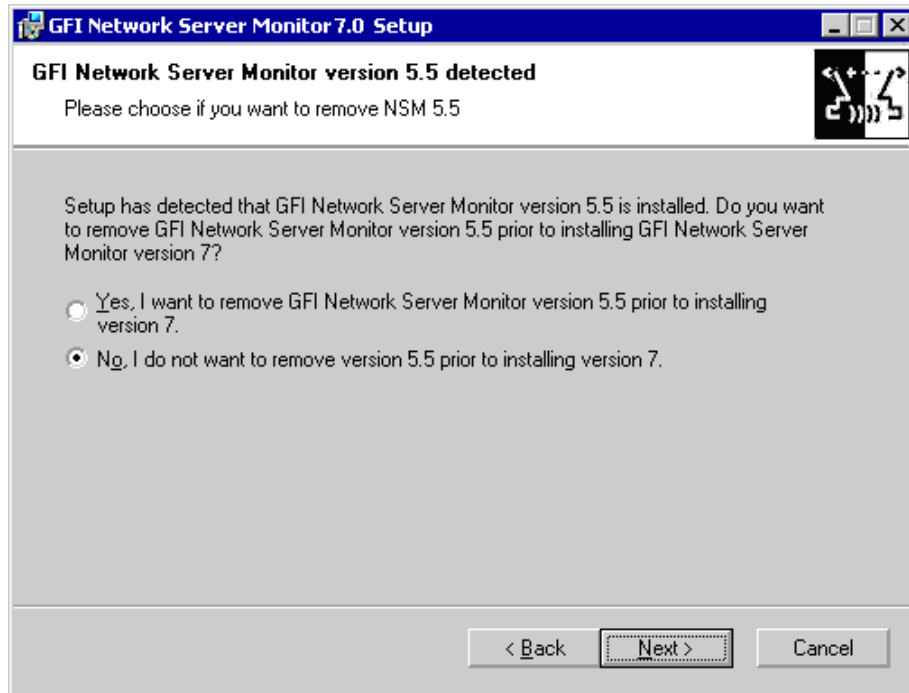
Any computer that you wish to monitor requires:

- WMI - When using checks having WMI scripts, install WMI on every Windows NT 4 target computer being monitored; this can be downloaded for free from www.microsoft.com/scripting.
- Windows Scripting Host 5.5 or higher – When using functions written in VB Script, target computers must have Windows Scripting Host 5.5 or higher installed; this can be downloaded for free from www.microsoft.com/scripting.

Installation procedure

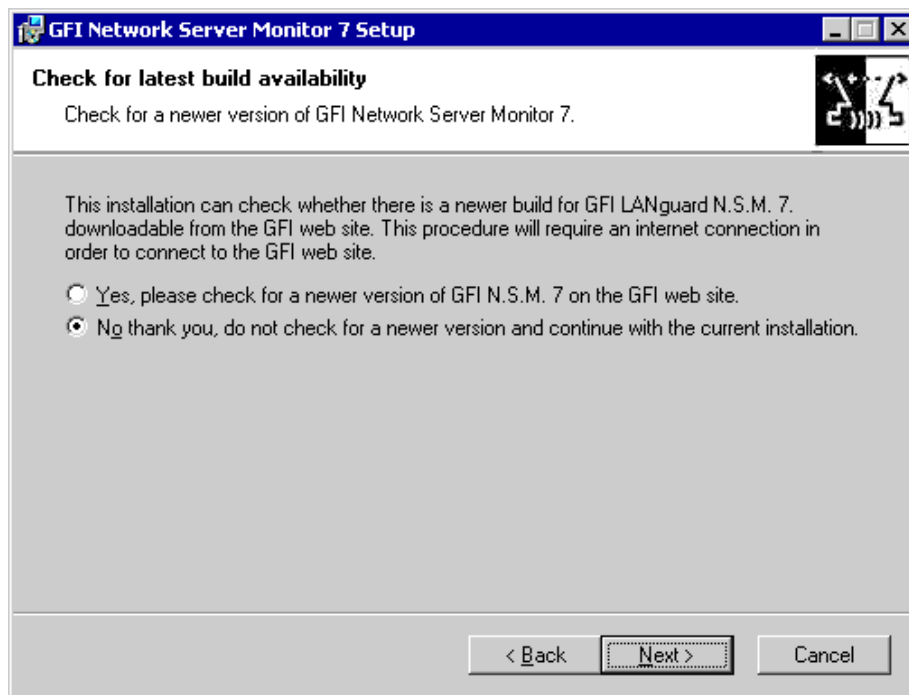
The installation wizard installs the actual monitor service, the configuration module and all the required application files automatically. To start an installation:

1. Exit all Windows Programs and log on as Administrator.
2. Launch the GFI Network Server Monitor installation wizard by double-clicking on 'NetworkServerMonitor7.exe'. As soon as the welcome dialog is displayed, click on 'Next' to start the installation.



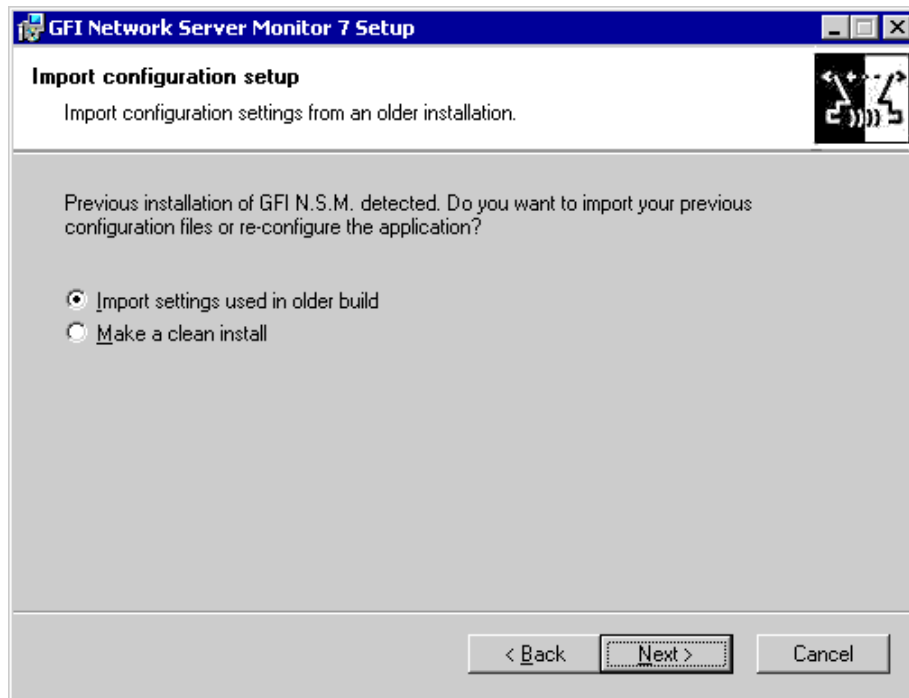
Screenshot 2 - Previous Version Detected

3. The Installation Wizard starts by checking if you have previous versions of GFI Network Server Monitor installed on your computer. Specify if you want to keep any previous installation detected or instruct the wizard to uninstall it for you.



Screenshot 3 - Check for latest build

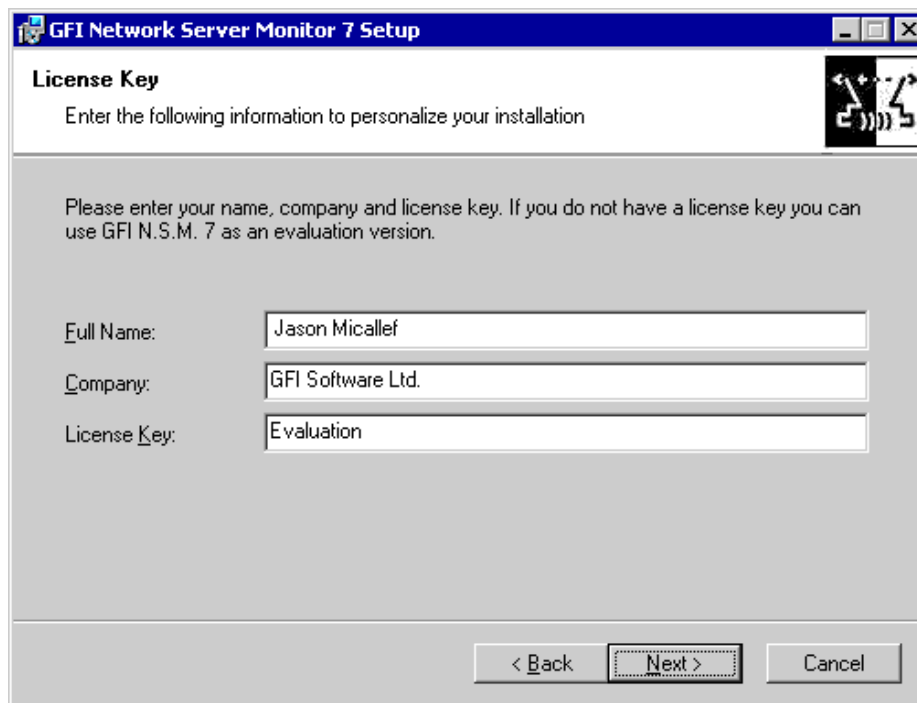
4. Choose whether you want the installation wizard to look for a newer version of GFI Network Server Monitor on the GFI website or click 'Next' to continue with the current installation. In the license dialog, read the licensing agreement carefully. Mark 'I Accept the Licensing agreement' and click on 'Next' to continue.



Screenshot 4 – Import settings from an older installation

NOTE: The following stage is required only if GFI Network Server Monitor 6 or higher have been previously installed on your computer.

5. Choose whether you want to import configuration settings from an existing installation or else continue with a new (clean) installation. Click on 'Next' to continue.

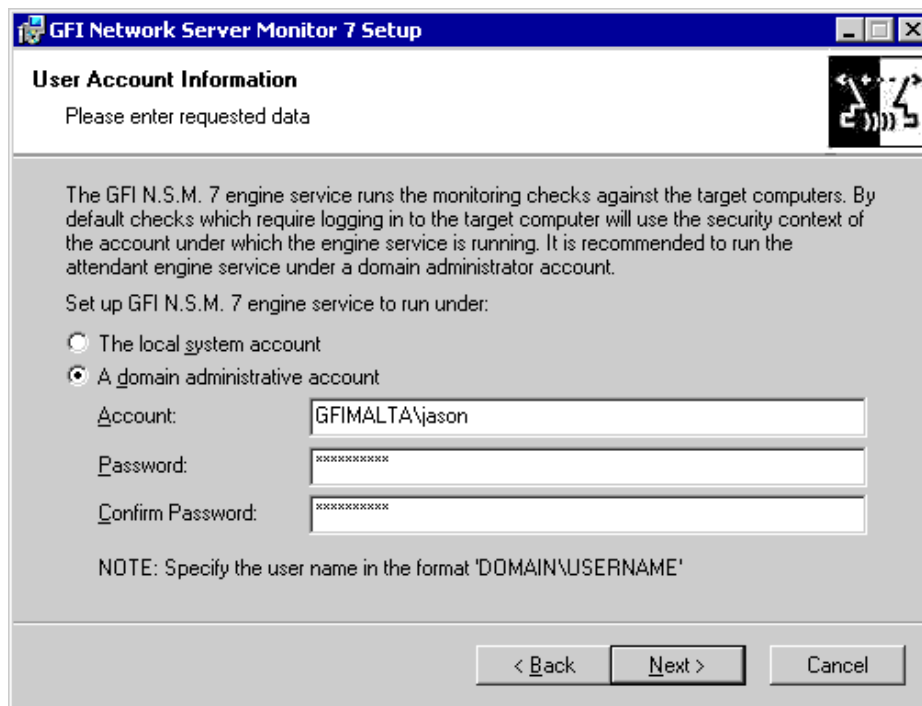


Screenshot 5 - User and License key details

NOTE: The following stage is only required during a new (clean) installation.

6. Specify the full user name, the company name and the license key. If you are evaluating the product, leave the evaluation key as default (i.e. "Evaluation"). Click on 'Next' to continue.

NOTE: After you have purchased the product, there is no need to uninstall and reconfigure GFI Network Server Monitor because you can enter the new license key directly from the GFI Network Server Monitor configuration program. For more information, please refer to the 'Entering your License key after installation' section in this chapter.



GFI Network Server Monitor 7 Setup

User Account Information
Please enter requested data

The GFI N.S.M. 7 engine service runs the monitoring checks against the target computers. By default checks which require logging in to the target computer will use the security context of the account under which the engine service is running. It is recommended to run the attendant engine service under a domain administrator account.

Set up GFI N.S.M. 7 engine service to run under:

The local system account

A domain administrative account

Account: GFIM\ALTA\jason

Password: xxxxxxxx

Confirm Password: xxxxxxxx

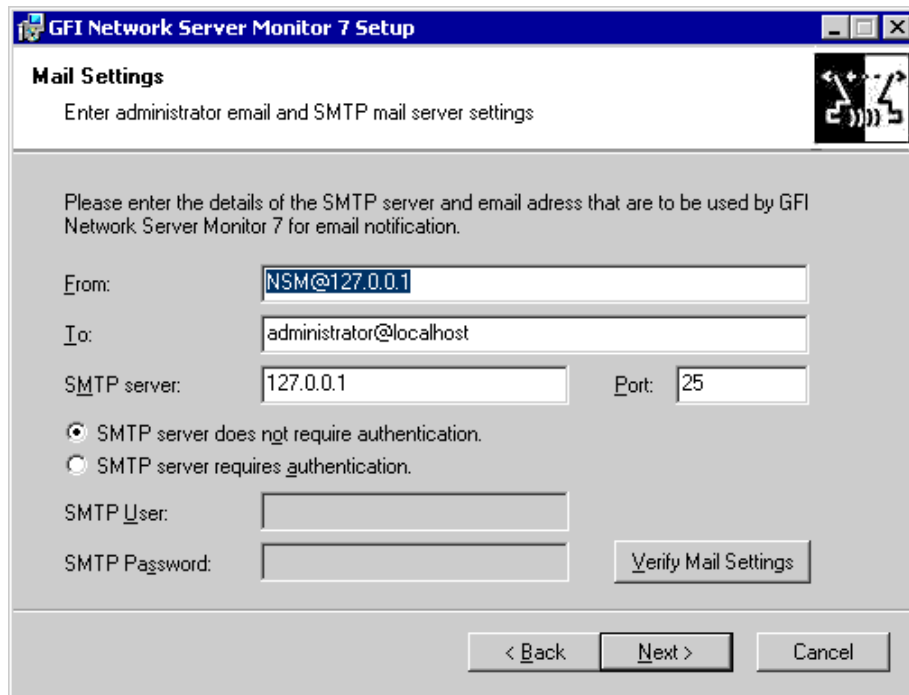
NOTE: Specify the user name in the format 'DOMAIN\USERNAME'

< Back Next > Cancel

Screenshot 6- Service Account details

7. Specify a service account for GFI Network Server Monitor.

NOTE: The GFI Network Server Monitor service must run with administrator credentials. It is recommended to provide a Domain Admin or Enterprise Admin account, because GFI Network Server Monitor will most likely need administrative rights to access the servers on your domain. However, it is not mandatory to provide a Domain/Enterprise Admin account for every monitoring check, since separate credentials can be provided or inherited.



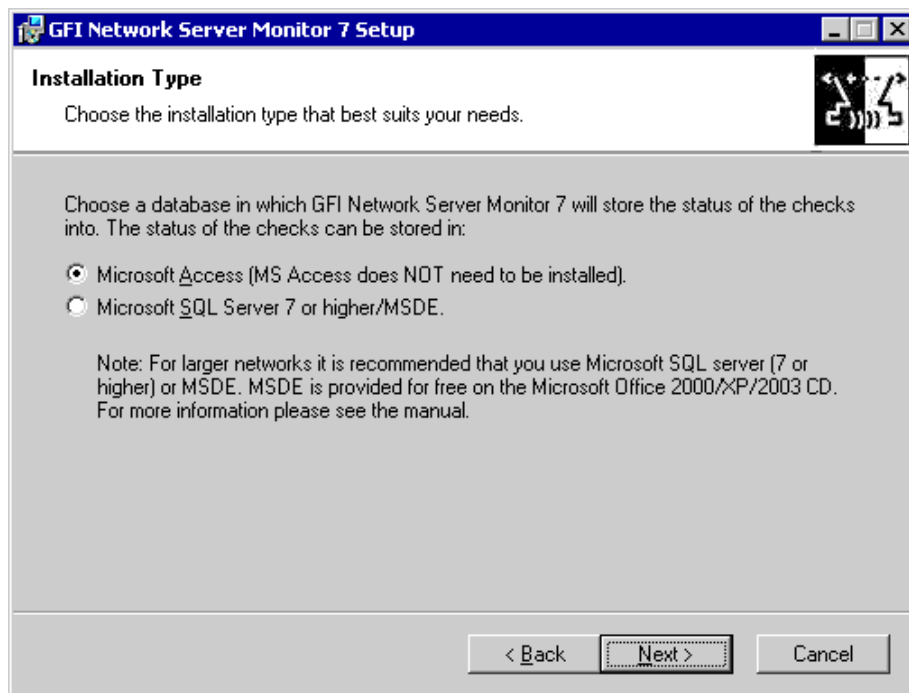
Screenshot 7 - Mail Server details

NOTE: The following stage is only required during a new (clean) installation.

8. Specify the SMTP/mail server details (Hostname/IP and Port) as well as the email address where generic alerts will be sent. Click on 'Next' to continue.

NOTE 1: You can define separate email alert addresses for each check from the check properties during configuration.

NOTE 2: You can verify your settings by sending a test message. Do this by clicking on 'Verify Mail Settings'.



Screenshot 8 - Select a database backend

9. Specify which database backend must be used to store the results of its monitoring operations. You can choose between Microsoft Access, Microsoft SQL Server 2000 or MSDE. Click on 'Next' to continue.

NOTE 1: MS Access database backend usage is recommended for small networks. For medium and larger networks, usage of Microsoft SQL Server 2000 as a database backend is recommended.

NOTE 2: MSDE can handle up to 2GB of data while Microsoft SQL server is capable of handling larger volumes of data efficiently and without limitations.

10. If Microsoft SQL Server is selected as a database backend, specify the IP or hostname on which the SQL server is installed as well as logon credentials. You can use both SQL Server users as well as Windows NT authentication to access the database. Click on 'Next' to continue.

NOTE: When using Windows NT authentication, ensure that the GFI Network Server Monitor services are running under user accounts which can access the SQL Server databases.

11. Specify the installation path for GFI Network Server Monitor and click on 'Next'. The installation will need approximately 30 MB of free disk space.

12. Click on 'Finish' to finalize the installation and launch GFI Network Server Monitor.

Entering your license key after installation

If you have purchased GFI Network Server Monitor, launch GFI Network Server Configuration, right click on 'Licensing' in the 'General' node and select 'Enter License key...'. Enter the license key in the dialogue on display and click on 'OK'.

NOTE 1: By default, GFI Network Server Monitor has an unrestricted fully functional evaluation period of 10 days. If the data you provided in the download form is correct, you will receive by email a license key which enables you to evaluate GFI Network Server Monitor for 30 days.

NOTE 2: You must have a GFI Network Server Monitor license for every server that you wish to monitor.

NOTE 3: Entering the license key should not be confused with the process of registering your company details on our website. This is important since it allows us to give you support and notify you of important product news. Register on: <http://www.gfi.com/pages/regfrm.htm>

Changing NSM Engine Service logon credentials after installation

The GFI Network Server Monitor Engine Service account details are set up during the installation phase. There is no way to change the service credentials from the GFI Network Server Monitor configuration application. The only way to change such details is as follows:

1. Start >Settings >Control Panel > Administrative Tools >Services.
2. Double click on '*GFI Network Server Monitor 7.0 engine*'.

3. Click on the 'Log On' tab and make the required changes.
4. Click on 'OK' to exit.