

Installing GFI WebMonitor

Introduction

This chapter provides you with information related to the installation of GFI WebMonitor 4.

System requirements

Install GFI WebMonitor on computers that meet the following hardware and software system requirements:

WebFilter Edition – Minimum hardware requirements

- Processor: 1.8 GHz processor clock speed
- RAM: 1 GB
- Hard disk: 2 GB of available space

WebSecurity Edition – Minimum hardware requirements

- Processor: 1.8 GHz processor clock speed
- RAM: 1 GB
- Hard disk: 10 GB of available space

GFI WebMonitor UnifiedProtection Edition – Minimum hardware requirements

- Processor: 1.8 GHz processor clock speed
- RAM: 2 GB
- Hard disk: 12 GB of available space

NOTE: The hard disk size specifications quoted for each edition are those required to install and operate the GFI WebMonitor edition. Allowance has been made for the downloads cache, processing space required for scanning, and history data files. However, this is only indicative; you may need to allocate additional disk space depending on your environment and number of users being monitored.

Software requirements – all editions

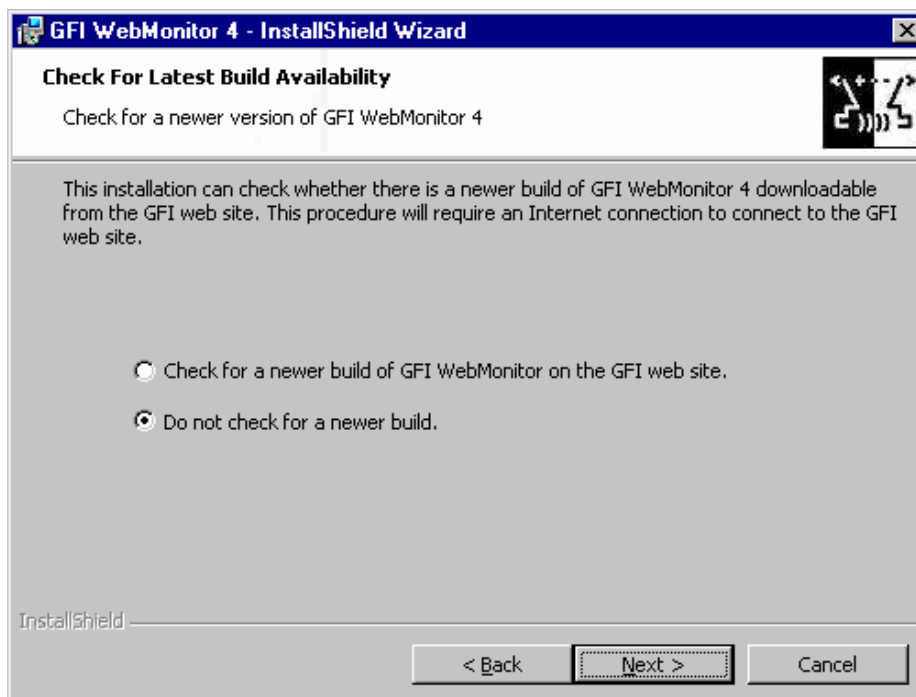
- Windows 2000 Server (SP4) or Windows 2003 operating system
- Microsoft ISA Server 2004 (SP3) or later
- Internet Explorer 6 or later
- .NET framework 2.0

NOTE: GFI WebMonitor can only be installed on the server machine hosting Microsoft ISA Server.

Installation procedure

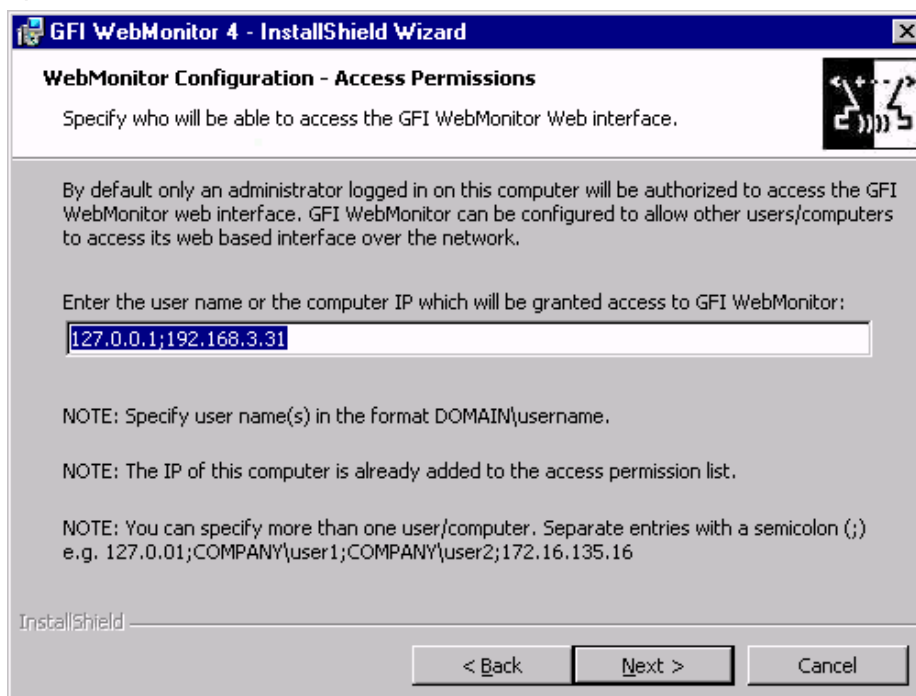
To install GFI WebMonitor 4:

1. Double-click on **webmonitor4.exe** and click **Next**.
2. Choose whether you want the installation wizard to search for a newer build of GFI WebMonitor 4 on the GFI website and click on the **Next** button.



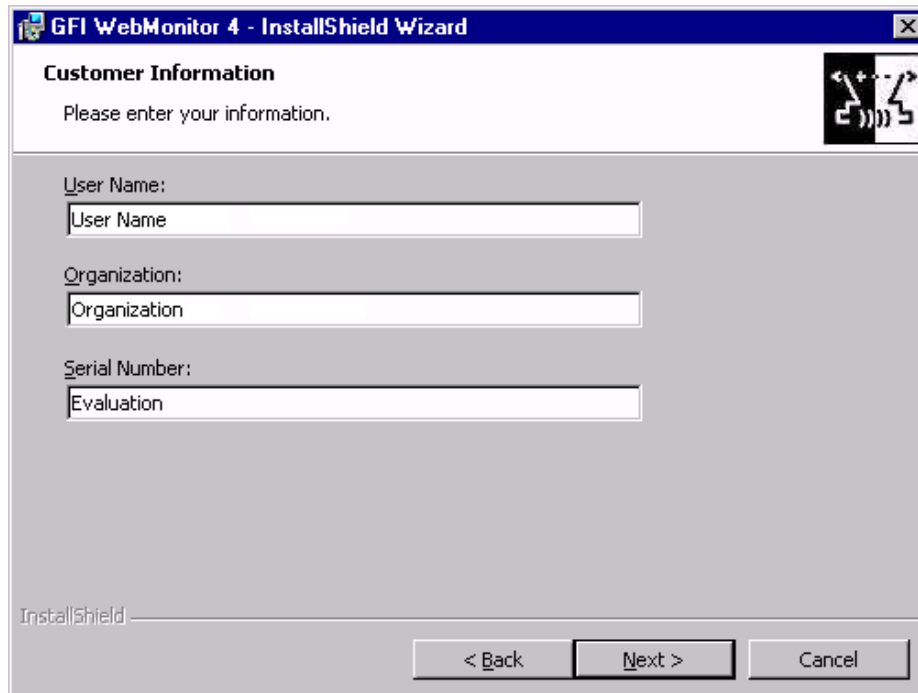
Screenshot 1 – Checking for a newer build of GFI WebMonitor

3. Read the licensing agreement carefully. To proceed with the installation, select the '*I accept the terms in the license agreement*' option and click **Next**.



Screenshot 2 – GFI WebMonitor access permissions

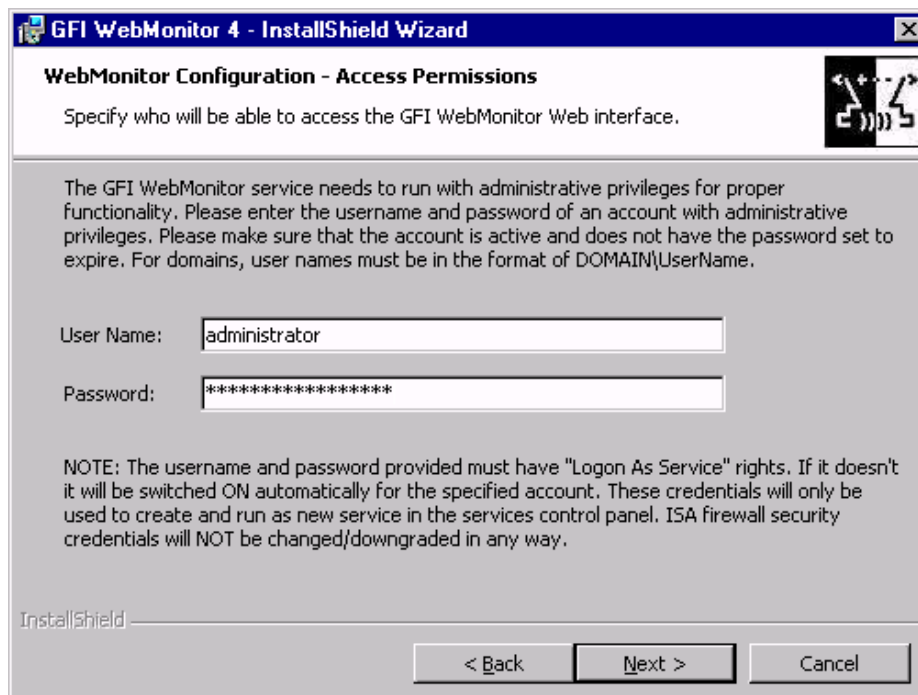
4. Specify the user name or the IP address which will be granted access to the GFI WebMonitor Web interface and click **Next** to continue.



The screenshot shows a Windows dialog box titled "GFI WebMonitor 4 - InstallShield Wizard". The main heading is "Customer Information" with the instruction "Please enter your information." Below this are three text input fields: "User Name:" containing "User Name", "Organization:" containing "Organization", and "Serial Number:" containing "Evaluation". At the bottom, there are three buttons: "< Back", "Next >", and "Cancel".

Screenshot 3 – GFI WebMonitor license details

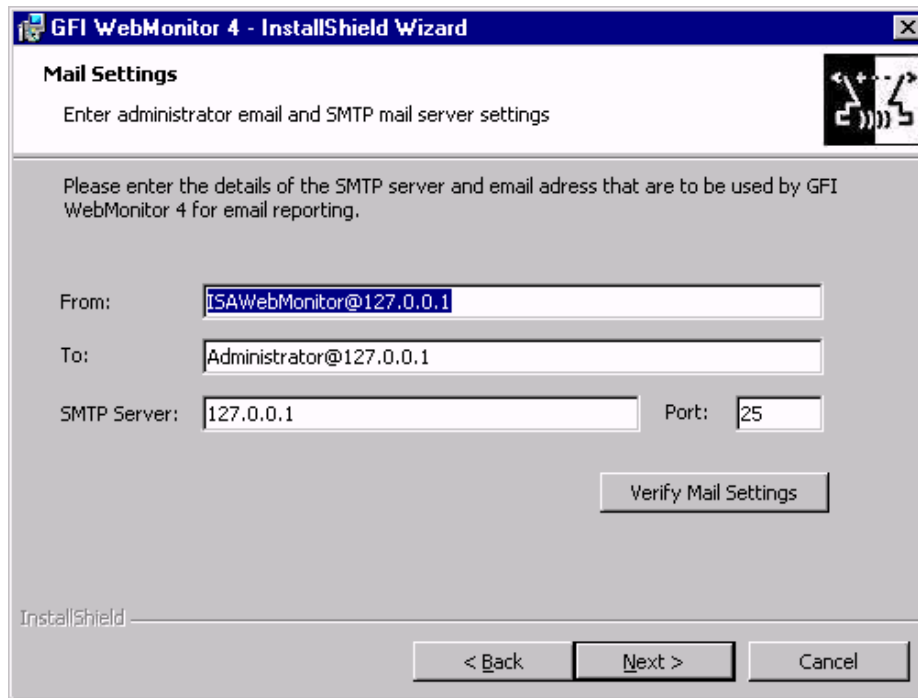
5. Specify the user name, organization and license key details. If you will be evaluating the product for 10 days, leave the default evaluation key as “Evaluation”. Click **Next** to continue.



The screenshot shows a Windows dialog box titled "GFI WebMonitor 4 - InstallShield Wizard". The main heading is "WebMonitor Configuration - Access Permissions" with the instruction "Specify who will be able to access the GFI WebMonitor Web interface." Below this is a paragraph of text: "The GFI WebMonitor service needs to run with administrative privileges for proper functionality. Please enter the username and password of an account with administrative privileges. Please make sure that the account is active and does not have the password set to expire. For domains, user names must be in the format of DOMAIN\UserName." There are two text input fields: "User Name:" containing "administrator" and "Password:" containing "*****". Below these is a "NOTE" section: "NOTE: The username and password provided must have 'Logon As Service' rights. If it doesn't it will be switched ON automatically for the specified account. These credentials will only be used to create and run as new service in the services control panel. ISA firewall security credentials will NOT be changed/downgraded in any way." At the bottom, there are three buttons: "< Back", "Next >", and "Cancel".

Screenshot 4 – GFI WebMonitor administrative credentials

6. Specify the administrative credentials which will be used to run the GFI WebMonitor service. Click **Next** to continue.



Screenshot 5 – GFI WebMonitor SMTP mail server settings

7. Specify the SMTP mail server details and email address where administrator notifications will be sent. Click **Next** to continue.
8. Specify an alternative installation path or click **Next** to use the default path and proceed with the installation.
9. Click **Install** to finalize the installation.

Launching GFI WebMonitor

Following the installation, launch GFI WebMonitor from **Start ▶ Programs ▶ GFI WebMonitor ▶ GFI WebMonitor**.

Alternately GFI WebMonitor's web console can also be launched through a web browser via the URL or I.P. address that points to the GFI WebMonitor installation on the ISA Server.

Example: `http://<isaserver IP address>:1007`

Downloading the WebGrade Database

By default, the WebGrade Database is not included with the GFI WebMonitor installation package. Upon installing GFI WebMonitor the latest version of this database is automatically downloaded and installed.

Downloading anti-virus signatures

By default, anti-virus signatures are not included with the GFI WebMonitor installation. Upon installing GFI WebMonitor, the latest signatures for the supported scanning engines are automatically downloaded and installed.

Upgrading from a previous version

The underlying operational and processing technologies on which GFI WebMonitor 4 is built are different than those in previous versions of GFI WebMonitor. Previous versions therefore cannot be imported or upgraded to GFI WebMonitor 4.